

# 春江花月夜

笙

琵琶古曲

秦鵬章、羅忠鎔 編配

## 【一】江樓鐘鼓

♩ = 20

2 6 A tempo

11 自由

16 3 4

♩ = 40

27

32 2

mf mp

## 【二】月上東山

38 2

mf

44 4

p f

51 3

2

【三】花影層疊

56

3 4

*p*

66 rit. . . . . A tempo

*pp*

71 稍慢 3

*mf*

77 【四】水雲深際 稍慢 ♩ = 36

5 4

*pp* *f*

89 2 7

*ff*

101 accel.

*mf poco cresc.* *f*

105 ♩ = 48

109 稍慢 2

*mf*

【五】漁歌晚唱

114 稍慢、自由  $\text{♩} = 40 - 48$  6 *mp*

123 2 *pp* *mp* *pp*

128 逐渐稍快 2 130 2 *mp* *pp*

134 2 *mp* *pp* *mp*

139 突快  $\text{♩} = 78$  accel. 2 *pp* *p*

145  $\text{♩} = 84$  *mf* *ff*

149 rit.  $\text{♩} = 40$  2 *mp*

春江花月夜 -- 笙

4

【六】洄瀾拍岸

155 慢起 ♩ = 32 - 96

Presto ♩ = 144

5

163

167

3

pp

173

rit. . . . ♩ = 40

3

ff

【七】歛乃歸舟

179 悠慢 ♩ = 32

poco accel.

♩ = 48

7

3

cresc.

191

poco a poco

195

199

203 ♩ = 96 - 144



207

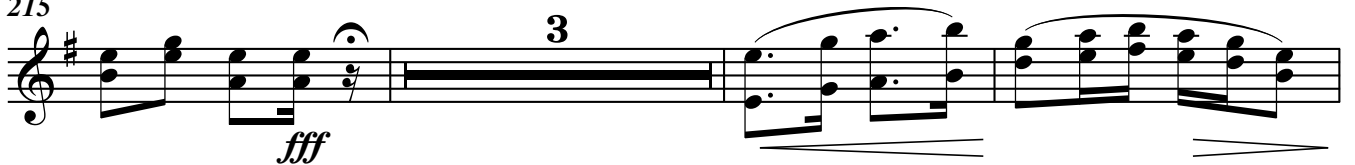


211



215

轉慢 ♩ = 40

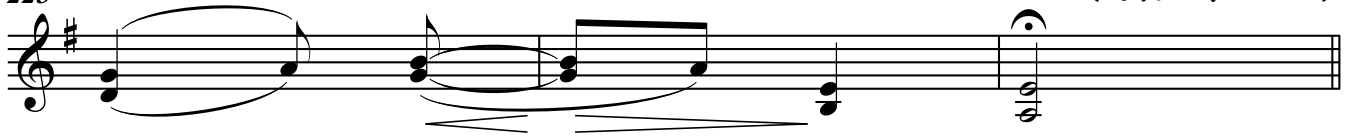


221



225

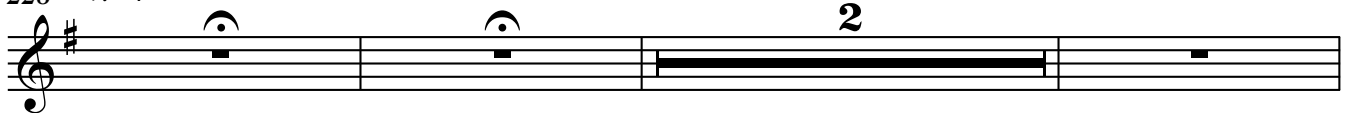
(延長至箏 rit. 止)



【八】尾聲

228 自由

♩ = 56



233

molto rit. . .

